

Standard Slot

Supplied with lid

| nominal size | external dimensions | | part no. selection | | | | standard pack | |
|-----------------|---------------------|----------------------|-----------------------|---------------|----------------|----------------|---------------|-------------------------------|
| | w x h inches | width inches (mm) | height inches (mm) | gray PVC | white PVC | black PVC | blue PVC | no. of lengths 6 1/2' each |
| 1" x 1 1/2" | 1.14 (29) | 1.61 (41) | B25x40S-R | B25x40S/W-R | B25x40S/BL-R | – | 12 | 78 |
| 1" x 2" | 1.14 (29) | 2.13 (54) | B25x60S-R | B25x60S/W-R | B25x60S/BL-R | B25x60S/BU-R | 12 | 78 |
| 1" x 3" | 1.14 (29) | 3.11 (79) | B25x80S-R | B25x80S/W-R | B25x80S/BL-R | B25x80S/BU-R | 8 | 52 |
| 1" x 4" | 1.18 (30) | 4.13 (105) | B25x100S-R | B25x100S/W-R | B25x100S/BL-R | B25x100S/BU-R | 8 | 52 |
| 1 1/2" x 1 1/2" | 1.61 (41) | 1.61 (41) | B40x40S-R | B40x40S/W-R | B40x40S/BL-R | – | 12 | 78 |
| 1 1/2" x 2" | 1.61 (41) | 2.13 (54) | B40x60S-R | B40x60S/W-R | B40x60S/BL-R | B40x60S/BU-R | 8 | 52 |
| 1 1/2" x 3" | 1.54 (39) | 3.11 (79) | B40x80S-R | B40x80S/W-R | B40x80S/BL-R | B40x80S/BU-R | 8 | 52 |
| 1 1/2" x 4" | 1.69 (43) | 4.13 (105) | B40x100S-R | B40x100S/W-R | B40x100S/BL-R | B40x100S/BU-R | 8 | 52 |
| 2" x 1" | 2.13 (54) | 1.10 (28) | B60x25S-R | B60x25S/W-R | B60x25S/BL-R | – | 12 | 78 |
| 2" x 1 1/2" | 2.13 (54) | 1.61 (41) | B60x40S-R | B60x40S/W-R | B60x40S/BL-R | – | 8 | 52 |
| 2" x 2" | 2.13 (54) | 2.13 (54) | B60x60S-R | B60x60S/W-R | B60x60S/BL-R | B60x60S/BU-R | 8 | 52 |
| 2" x 3" | 2.17 (55) | 3.11 (79) | B60x80S-R | B60x80S/W-R | B60x80S/BL-R | B60x80S/BU-R | 8 | 52 |
| 2" x 4" | 2.20 (56) | 4.13 (105) | B60x100S-R | B60x100S/W-R | B60x100S/BL-R | – | 4 | 26 |
| 3" x 1 1/2" | 3.15 (80) | 1.61 (41) | B80x40S-R | B80x40S/W-R | B80x40S/BL-R | – | 8 | 52 |
| 3" x 2" | 3.07 (78) | 2.13 (54) | B80x60S-R | B80x60S/W-R | B80x60S/BL-R | – | 8 | 52 |
| 3" x 3" | 3.15 (80) | 3.15 (80) | B80x80S-R | B80x80S/W-R | B80x80S/BL-R | B80x80S/BU-R | 8 | 52 |
| 3" x 4" | 3.15 (80) | 4.13 (105) | B80x100S-R | B80x100S/W-R | B80x100S/BL-R | B80x100S/BU-R | 4 | 26 |
| 4" x 2" | 4.21 (107) | 2.13 (54) | B100x60S-R | B100x60S/W-R | B100x60S/BL-R | – | 4 | 26 |
| 4" x 3" | 4.21 (107) | 3.15 (80) | B100x80S-R | B100x80S/W-R | B100x80S/BL-R | B100x80S/BU-R | 4 | 26 |
| 4" x 4" | 4.21 (107) | 4.09 (104) | B100x100S-R | B100x100S/W-R | B100x100S/BL-R | B100x100S/BU-R | 4 | 26 |
| 4" x 5" | 4.21 (107) | 5.12 (130) | B100x130S-R | B100x130S/W-R | B100x130S/BL-R | – | 4 | 26 |
| 5" x 3" | 5.16 (131) | 3.07 (78) | B130x80S-R | B130x80S/W-R | B130x80S/BL-R | – | 4 | 26 |

MATERIAL

self extinguishing PVC

SERVICE TEMPERATURE

+5° F to +140° F (-15° C to +60° C)

STANDARDS

base slots to DIN 43659

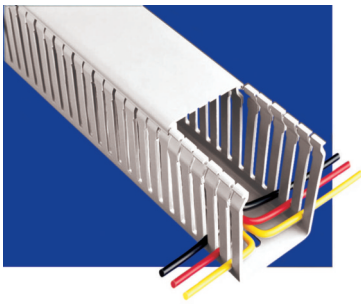
STANDARD COLORS

gray, white, black & blue

FLAMMABILITY

UL94 V-O rated material





Thin Slot

Supplied with lid

| nominal size w x h inches | external dimensions | | part no. selection | | | carton quantity | |
|---------------------------------|----------------------|-----------------------|--------------------|---------------|----------------|-------------------------------|---------------|
| | width inches (mm) | height inches (mm) | gray PVC | white PVC | black PVC | no. of lengths 6 1/2' each | total feet |
| 1" x 1 1/2" | 1.14 (29) | 1.61(41) | B25x40T-R | B25x40T/W-R | B25x40T/BL-R | 12 | 78 |
| 1" x 2" | 1.14 (29) | 2.13 (54) | B25x60T-R | B25x60T/W-R | B25x60T/BL-R | 12 | 78 |
| 1" x 3" | 1.14 (29) | 3.11 (79) | B25x80T-R | B25x80T/W-R | B25x80T/BL-R | 8 | 52 |
| 1" x 4" | 1.18 (30) | 4.13 (105) | B25x100T-R | B25x100T/W-R | B25x100T/BL-R | 8 | 52 |
| 1 1/2" x 1 1/2" | 1.61 (41) | 1.61 (41) | B40x40T-R | B40x40T/W-R | B40x40T/BL-R | 12 | 78 |
| 1 1/2" x 2" | 1.61 (41) | 2.13 (54) | B40x60T-R | B40x60T/W-R | B40x60T/BL-R | 8 | 52 |
| 1 1/2" x 3" | 1.61 (41) | 3.11 (79) | B40x80T-R | B40x80T/W-R | B40x80T/BL-R | 8 | 52 |
| 1 1/2" x 4" | 1.69 (43) | 4.13 (105) | B40x100T-R | B40x100T/W-R | B40x100T/BL-R | 8 | 52 |
| 2" x 1 1/2" | 2.20 (56) | 1.61 (41) | B60x40T-R | B60x40T/W-R | B60x40T/BL-R | 8 | 52 |
| 2" x 2" | 2.13 (54) | 2.13 (54) | B60x60T-R | B60x60T/W-R | B60x60T/BL-R | 8 | 52 |
| 2" x 3" | 2.17 (55) | 3.11 (79) | B60x80T-R | B60x80T/W-R | B60x80T/BL-R | 8 | 52 |
| 2" x 4" | 2.20 (56) | 4.13 (105) | B60x100T-R | B60x100T/W-R | B60x100T/BL-R | 4 | 26 |
| 3" x 1 1/2" | 3.15 (80) | 1.61 (41) | B80x40T-R | B80x40T/W-R | B80x40T/BL-R | 8 | 52 |
| 3" x 2" | 3.07 (78) | 2.13 (54) | B80x60T-R | B80x60T/W-R | B80x60T/BL-R | 8 | 52 |
| 3" x 3" | 3.15 (80) | 3.15 (80) | B80x80T-R | B80x80T/W-R | B80x80T/BL-R | 8 | 52 |
| 3" x 4" | 3.15 (80) | 4.13 (105) | B80x100T-R | B80x100T/W-R | B80x100T/BL-R | 4 | 26 |
| 4" x 2" | 4.21 (107) | 2.13 (54) | B100x60T-R | B100x60T/W-R | B100x60T/BL-R | 4 | 26 |
| 4" x 3" | 4.21 (107) | 3.15 (80) | B100x80T-R | B100x80T/W-R | B100x80T/BL-R | 4 | 26 |
| 4" x 4" | 4.21 (107) | 4.09 (104) | B100x100T-R | B100x100T/W-R | B100x100T/BL-R | 4 | 26 |

MATERIAL

self extinguishing PVC

SERVICE TEMPERATURE

+5° F to +140° F (-15° C to +60° C)

STANDARDS

base slots to DIN 43659

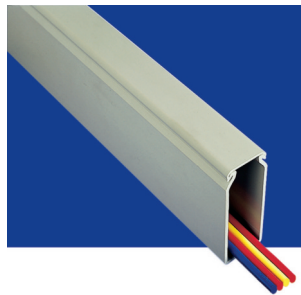
STANDARD COLORS

gray, white & black

FLAMMABILITY

UL94 V-O rated material





Unslotted Wall

Supplied with lid

| nominal size w x h inches | external dimensions | | part no. selection | | | carton quantity | |
|---------------------------------|----------------------|-----------------------|--------------------|----------------|-----------------|-------------------------------|---------------|
| | width inches (mm) | height inches (mm) | gray PVC | white PVC | black PVC | no. of lengths 6 1/2' each | total feet |
| 1" x 1 1/2" | 1.14 (29) | 1.61 (41) | B25x40US-R | B25x40US/W-R | B25x40US/BL-R | 12 | 78 |
| 1" x 2" | 1.14 (29) | 2.13 (54) | B25x60US-R | B25x60US/W-R | B25x60US/BL-R | 12 | 78 |
| 1" x 3" | 1.14 (29) | 3.11 (79) | B25x80US-R | B25x80US/W-R | B25x80US/BL-R | 8 | 52 |
| 1" x 4" | 1.18 (30) | 4.13 (105) | B25x100US-R | B25x100US/W-R | B25x100US/BL-R | 8 | 52 |
| 1 1/2" x 1 1/2" | 1.61 (41) | 1.61 (41) | B40x40US-R | B40x40US/W-R | B40x40US/BL-R | 12 | 78 |
| 1 1/2" x 2" | 1.61 (41) | 2.13 (54) | B40x60US-R | B40x60US/W-R | B40x60US/BL-R | 8 | 52 |
| 1 1/2" x 3" | 1.54 (39) | 3.11 (79) | B40x80US-R | B40x80US/W-R | B40x80US/BL-R | 8 | 52 |
| 1 1/2" x 4" | 1.69 (43) | 4.13 (105) | B40x100US-R | B40x100US/W-R | B40x100US/BL-R | 8 | 52 |
| 2" x 1" | 2.13 (54) | 1.10 (28) | B60x25US-R | B60x25US/W-R | B60x25US/BL-R | 12 | 78 |
| 2" x 1 1/2" | 2.13 (54) | 1.61 (41) | B60x40US-R | B60x40US/W-R | B60x40US/BL-R | 8 | 52 |
| 2" x 2" | 2.13 (54) | 2.13 (54) | B60x60US-R | B60x60US/W-R | B60x60US/BL-R | 8 | 52 |
| 2" x 3" | 2.17 (55) | 3.11 (79) | B60x80US-R | B60x80US/W-R | B60x80US/BL-R | 8 | 52 |
| 2" x 4" | 2.20 (56) | 4.13 (105) | B60x100US-R | B60x100US/W-R | B60x100US/BL-R | 4 | 26 |
| 3" x 1 1/2" | 3.15 (80) | 1.61 (41) | B80x40US-R | B80x40US/W-R | B80x40US/BL-R | 8 | 52 |
| 3" x 2" | 3.07 (78) | 2.13 (54) | B80x60US-R | B80x60US/W-R | B80x60US/BL-R | 8 | 52 |
| 3" x 3" | 3.15 (80) | 3.15 (80) | B80x80US-R | B80x80US/W-R | B80x80US/BL-R | 8 | 52 |
| 3" x 4" | 3.15 (80) | 4.13 (105) | B80x100US-R | B80x100US/W-R | B80x100US/BL-R | 4 | 26 |
| 4" x 2" | 4.21 (107) | 2.13 (54) | B100x60US-R | B100x60US/W-R | B100x60US/BL-R | 4 | 26 |
| 4" x 3" | 4.21 (107) | 3.15 (80) | B100x80US-R | B100x80US/W-R | B100x80US/BL-R | 4 | 26 |
| 4" x 4" | 4.21 (107) | 4.09 (104) | B100x100US-R | B100x100US/W-R | B100x100US/BL-R | 4 | 26 |
| 4" x 5" | 4.21 (107) | 5.12 (130) | B100x130US-R | B100x130US/W-R | B100x130US/BL-R | 4 | 26 |
| 5" x 3" | 5.16 (131) | 3.07 (78) | B130x80US-R | B130x80US/W-R | B130x80US/BL-R | 4 | 26 |

MATERIAL

self extinguishing PVC

SERVICE TEMPERATURE

+5° F to +140° F (-15° C to +60° C)

STANDARDS

base slots to DIN 43659

STANDARD COLORS

gray, white & black

FLAMMABILITY

UL94 V-O rated material



Product Features

The Panel building market has very specific needs. This unique cable management system developed specifically for use within cabinets and control panels. Select Standard, Thin, Closed Slot and Unslotted depending on the application. Available in a number of sizes and colors, manufactured in standard PVC material.

CABLE RETENTION

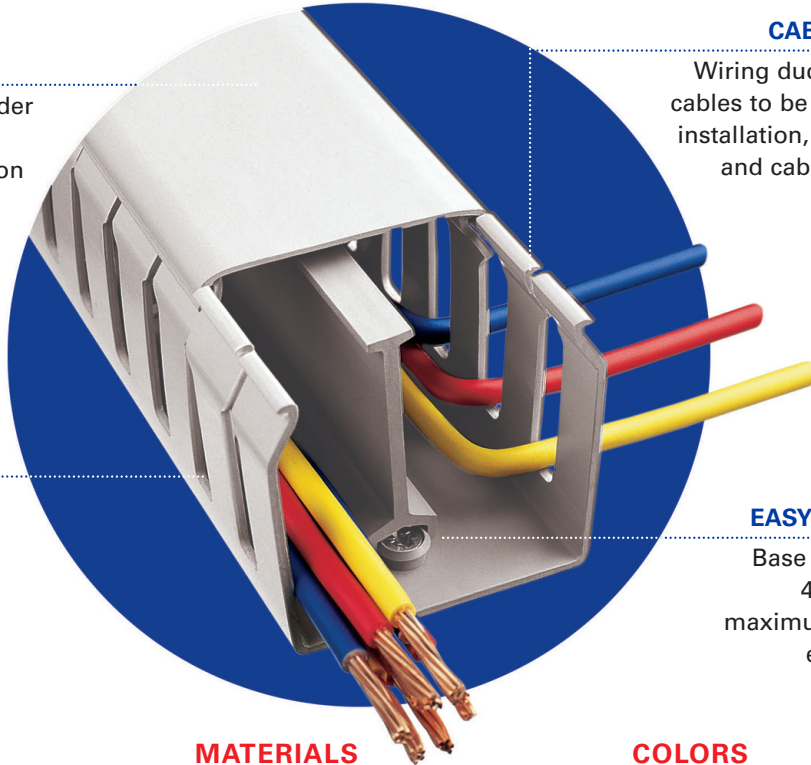
Wiring duct design allows cables to be retained during installation, making routing and cable termination a simple process

LID RETENTION

Friction bead on wider trunking provides excellent lid retention to combat vibration

BREAK-OUT

Fingers can be removed easily without the use of cutting tools



EASY INSTALLATION

Base slots are to DIN 43659, providing maximum flexibility for easy installation

SIZE RANGE

- Wide range of sizes to cater to a broad spectrum of requirements
- New larger sizes with narrower profiles to reduce panel footprint

MATERIALS

- The standard range is manufactured using self extinguishing PVC

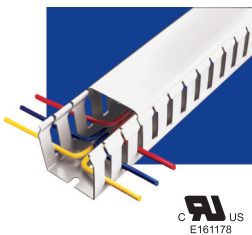
COLORS

- Gray, white and black are standard
- Blue is offered for intrinsically safe wiring applications
- Other colors available

Standard Wiring Duct

PVC provides a lightweight self extinguishing wiring duct with excellent rigidity and performance characteristics.

Standard Slot



- Wide fingers giving additional cable support
- Terminated wires can be re-routed easily
- 0.79" slot pitch
- 0.31" slot width
- 22 sizes, available in gray, white, black or blue

Unslotted



- Ideal where no break-outs are required or side wall access is infrequent
- Complete cable protection
- 22 sizes, in either gray, white or black

Thin Slot



- Ideal for use with slimmer terminal blocks where more access is required
- Improves appearance of panels with cables out in best position
- 0.39" slot pitch
- 0.16" slot width
- 19 sizes in a choice of gray, white or black